

DATE	PCE	TCE	cis-1,2-DCE	trans-1,2-DCE	VC
5/02/2012	0.2 U	0.2 U	0.2 U	0.2 U	0.2 U
6/25/2012	0.2 U	0.2 U	0.2 U	0.2 U	0.2 U
9/27/2012	0.2 U	0.2 U	0.2 U	0.2 U	0.2 U
12/27/2012	0.2 U	0.2 U	0.2 U	0.2 U	0.26 U
3/14/2013	0.2 U	0.2 U	0.2 U	0.2 U	0.2 U
3/11/2014	0.2 U	0.2 U	0.2 U	0.2 U	0.2 U

DATE	PCE	TCE	cis-1,2-DCE	trans-1,2-DCE	VC
5/02/2012	0.2 U	0.2 U	0.2 U	0.2 U	0.2 U
6/25/2012	0.2 U	0.2 U	0.2 U	0.2 U	0.2 U
9/27/2012	0.2 U	0.2 U	0.2 U	0.2 U	0.2 U
12/27/2012	0.2 U	0.2 U	0.2 U	0.2 U	0.26 U
3/13/2013	0.2 U	0.2 U	0.2 U	0.2 U	0.2 U
3/11/2014	0.2 U	0.2 U	0.2 U	0.2 U	0.2 U

DATE	PCE	TCE	cis-1,2-DCE	trans-1,2-DCE	VC
5/02/2012	5.2	2.2	2.2	0.2 U	0.76
6/25/2012	0.85	2	1.8	0.2 U	0.58
9/27/2012	0.21	0.76	1.7	0.2 U	0.26
12/27/2012	4.4	2.6	3.9	0.2 U	1.9
3/13/2013	2.7	2.3	1	0.2 U	0.37
8/06/2013	1.9	2	4.7	0.2 U	0.99
3/11/2014	9.6	1.7	2.1	0.2 U	0.78
11/05/2014	7	2.6	3.9	0.2 U	2.6

DATE	PCE	TCE	cis-1,2-DCE	trans-1,2-DCE	VC
5/03/2012	0.2 U	1.3	1.8	0.2 U	0.2 U
9/28/2012	0.2 U	1.8	6.1	0.2 U	0.2 U
3/14/2013	0.2 U	0.88	0.77	0.2 U	0.2 U
8/06/2013	0.2 U	1.7	1.2	0.2 U	0.2
3/12/2014	0.4 U	3.2	8.1	0.97	0.61

DATE	PCE	TCE	cis-1,2-DCE	trans-1,2-DCE	VC
5/02/2012	0.2 U	0.2 U	0.2 U	0.2 U	0.2 U
6/25/2012	0.2 U	0.2 U	0.2 U	0.2 U	0.2 U
9/28/2012	0.2 U	0.2 U	0.2 U	0.2 U	0.2 U
12/27/2012	0.2 U	0.2 U	0.2 U	0.2 U	0.26 U
3/15/2013	0.2 U	0.2 U	0.2 U	0.2 U	0.2 U
3/12/2014	0.2 U	0.2 U	0.2 U	0.2 U	0.2 U

DATE	PCE	TCE	cis-1,2-DCE	trans-1,2-DCE	VC
3/14/2013	0.2 U	0.2 U	0.2 U	0.2 U	0.2 U

DATE	PCE	TCE	cis-1,2-DCE	trans-1,2-DCE	VC
5/04/2012	0.4 U	62	46	8.7	0.83
9/26/2012	0.4 U	64	38	8.7	1
3/15/2013	0.4 U	39	40	7.2	0.49
8/8/2013	0.2 U	38	38	9.2	0.77
3/13/2014	0.2 U	31	48	9	0.86
9/24/2014	0.4 U	28	54	9.2	0.73

DATE	PCE	TCE	cis-1,2-DCE	trans-1,2-DCE	VC
3/13/2013	0.2 U	1.7	1.1	0.2 U	0.2 U
8/8/2013	0.22	1.7	1.8	0.2 U	0.2 U
3/13/2014	0.2 U	1.3	1.1	0.2 U	0.2 U

DATE	PCE	TCE	cis-1,2-DCE	trans-1,2-DCE	VC
5/3/2012	0.2 U	36	31	1.3	0.2 U
9/28/2012	0.4 U	75	38	1.7	0.4 U
3/14/2013	0.2 U	56	21	1.1	0.2 U
8/7/2013	0.4 U	50	25	1.4	0.4 U
3/13/2014	0.2 U	38	12	0.61	0.2 U
9/24/2014	0.4 U	38	51	1.6	0.4 U

DATE	PCE	TCE	cis-1,2-DCE	trans-1,2-DCE	VC
5/03/2012	0.2 U	1.3	1.8	0.2 U	0.2 U
9/28/2012	0.2 U	1.8	6.1	0.2 U	0.2 U
3/14/2013	0.2 U	0.88	0.77	0.2 U	0.2 U
8/06/2013	0.2 U	1.7	1.2	0.2 U	0.2
3/12/2014	0.4 U	3.2	8.1	0.97	0.61

DATE	PCE	TCE	cis-1,2-DCE	trans-1,2-DCE	VC
5/04/2012	0.2 U	0.2 U	0.4	0.2 U	0.2 U
9/27/2012	0.21	0.2 U	0.2 U	0.2 U	0.2 U
3/13/2013	0.2 U	0.2 U	0.2 U	0.2 U	0.2 U
8/06/2013	0.2 U	0.2 U	1.3	0.2 U	0.2 U
3/10/2014	0.2 U	0.2 U	0.2 U	0.2 U	0.2 U

DATE	PCE	TCE	cis-1,2-DCE	trans-1,2-DCE	VC
5/03/2012	0.2 U	0.2 U	0.29	0.2 U	0.91
9/28/2012	0.2 U	0.2 U	0.27	0.2 U	0.57
3/13/2013	0.2 U	0.2 U	0.22	0.2 U	0.64
3/12/2014	0.2 U	0.2 U	0.2 U	0.2 U	0.2 U

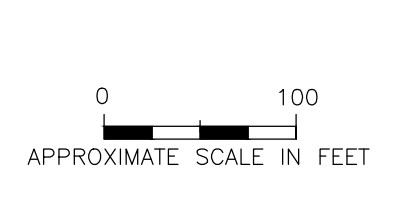
DATE	PCE	TCE	cis-1,2-DCE	trans-1,2-DCE	VC
5/04/2012	0.2 U	0.2 U	0.2 U	0.2 U	0.2 U
9/27/2012	0.2 U	0.2 U	0.67	0.2 U	0.2 U

DATE	PCE	TCE	cis-1,2-DCE	trans-1,2-DCE	VC
5/04/2012	26	19	2.9	0.2 U	0.2 U
9/26/2012	3.6	4.7	3.2	0.2 U	0.2 U
3/13/2013	21	14	2.9	0.2 U	0.2 U
8/8/2013	8.6	4.6	4.7	0.2 U	0.2 U
3/13/2014	21	12	2.8	0.2 U	0.2 U
9/23/2014	11	5.5	3.3	0.2 U	0.2 U

DATE	PCE	TCE	cis-1,2-DCE	trans-1,2-DCE	VC
5/04/2012	1.7	23	3.9	0.2 U	0.2 U
9/26/2012	2.2	31	4.2	0.2 U	0.2 U
3/13/2013	2.7	21	2.3	0.2 U	0.2 U
8/07/2013	3.9	22	2.5	0.2 U	0.2 U
3/12/2014	3.5	26	2.3	0.2 U	0.2 U
9/23/2014	6.3	23	0.96	0.2 U	0.2 U

LEGEND

- ◆ CAPITAL INDUSTRIES MONITORING WELL
- ALL ANALYTICAL RESULTS IN MICROGRAMS PER LITER, SAMPLE DATES LISTED
- DCE = DICHLOROETHENE
- PCE = TETRACHLOROETHENE
- TCE = TRICHLOROETHENE
- VC = VINYL CHLORIDE
- BOLD** = INDICATES CONCENTRATIONS EXCEED WEST OF FOURTH GROUNDWATER INVESTIGATION SCREENING LEVELS FOR GROUNDWATER
- U = INDICATES CONCENTRATIONS NOT DETECTED ABOVE THE STATED LABORATORY PRACTICAL QUANTITATION LIMIT

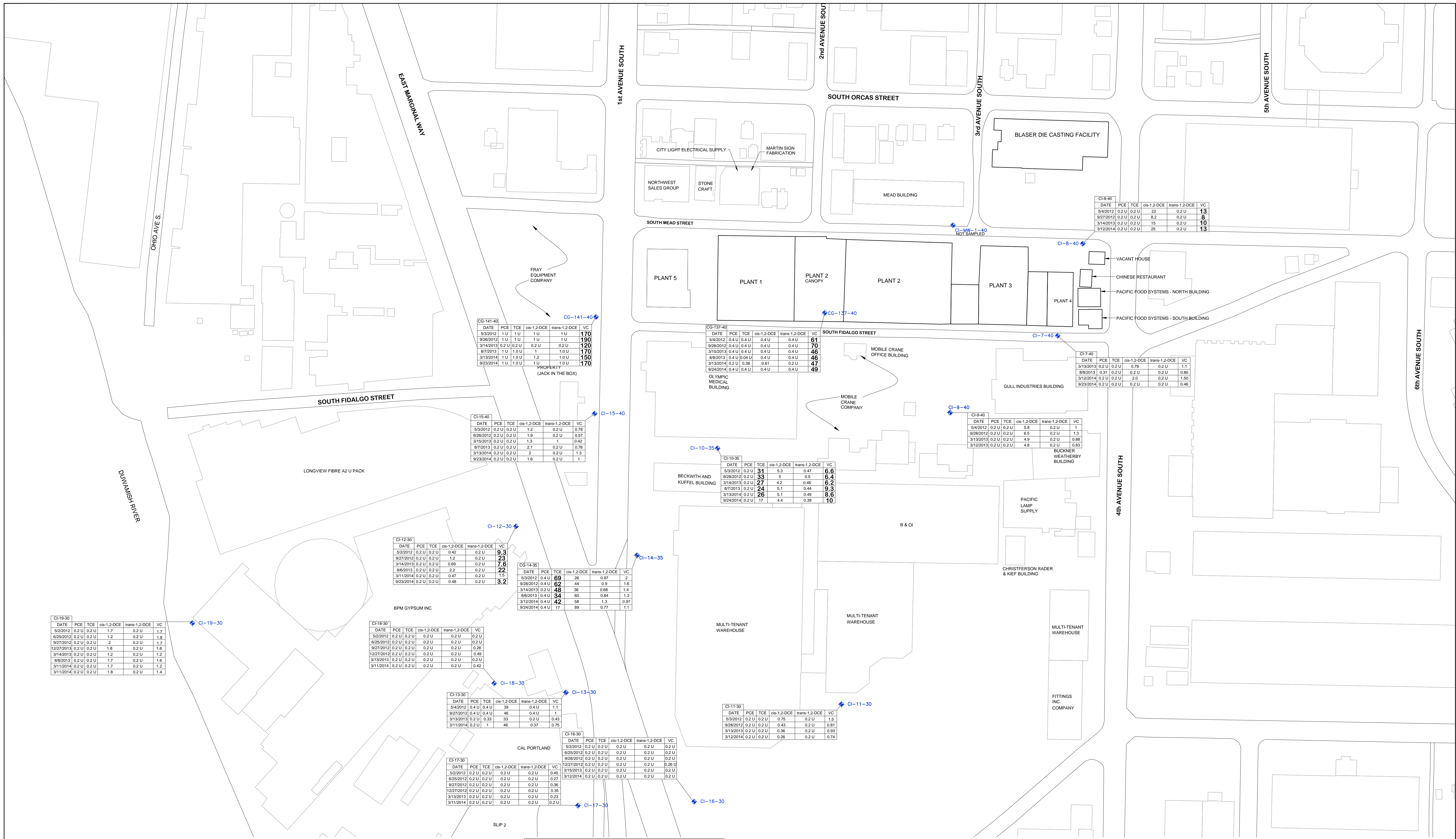


DRAFT

Washington
Issaquah | Bellingham | Seattle
Oregon
Portland | Bend
California
Oakland | Sacramento | Irvine
FARALLON
CONSULTING
Quality Service for Environmental Solutions | farallonconsulting.com

FIGURE 1
GROUNDWATER ANALYTICAL RESULTS FOR
WATER TABLE ZONE: 2012-2014
REMEDIAL INVESTIGATION
CAPITAL INDUSTRIES, INC.
SEATTLE, WASHINGTON
FARALLON PN: 457-007
Date: 12/22/2014 Disk Reference: 457-007c

Drawn By: DEW Checked By: JK



DATE	PCE	TCE	cis-1,2-DCE	trans-1,2-DCE	VC
5/2/2012	0.2 U	0.2 U	1.7	0.2 U	1.7
6/25/2012	0.2 U	0.2 U	1.2	0.2 U	1.8
9/27/2012	0.2 U	0.2 U	2	0.2 U	1.7
12/27/2013	0.2 U	0.2 U	1.8	0.2 U	1.6
3/14/2013	0.2 U	0.2 U	1.2	0.2 U	1.2
8/6/2013	0.2 U	0.2 U	1.7	0.2 U	1.6
3/11/2014	0.2 U	0.2 U	1.7	0.2 U	1.2
3/11/2014	0.2 U	0.2 U	1.8	0.2 U	1.4

DATE	PCE	TCE	cis-1,2-DCE	trans-1,2-DCE	VC
5/2/2012	0.2 U	0.2 U	0.2 U	0.2 U	0.2 U
6/25/2012	0.2 U	0.2 U	0.2 U	0.2 U	0.2 U
9/27/2012	0.2 U	0.2 U	0.2 U	0.2 U	0.2 U
12/27/2013	0.2 U	0.2 U	0.2 U	0.2 U	0.2 U
3/14/2013	0.2 U	0.2 U	0.2 U	0.2 U	0.49
8/6/2013	0.2 U	0.2 U	0.2 U	0.2 U	0.2 U
3/13/2013	0.2 U	0.2 U	0.2 U	0.2 U	0.2 U
3/11/2014	0.2 U	0.2 U	0.2 U	0.2 U	0.42

DATE	PCE	TCE	cis-1,2-DCE	trans-1,2-DCE	VC
5/4/2012	0.4 U	0.4 U	39	0.4 U	1.1
9/27/2012	0.4 U	0.4 U	46	0.4 U	1
3/13/2013	0.2 U	0.33	33	0.2 U	0.43
3/11/2014	0.2 U	1	46	0.37	0.75

DATE	PCE	TCE	cis-1,2-DCE	trans-1,2-DCE	VC
5/2/2012	0.2 U	0.2 U	0.2 U	0.2 U	0.45
6/25/2012	0.2 U	0.2 U	0.2 U	0.2 U	0.27
9/27/2012	0.2 U	0.2 U	0.2 U	0.2 U	0.36
12/27/2013	0.2 U	0.2 U	0.2 U	0.2 U	0.35
3/13/2013	0.2 U	0.2 U	0.2 U	0.2 U	0.23
3/11/2014	0.2 U	0.2 U	0.2 U	0.2 U	0.2 U

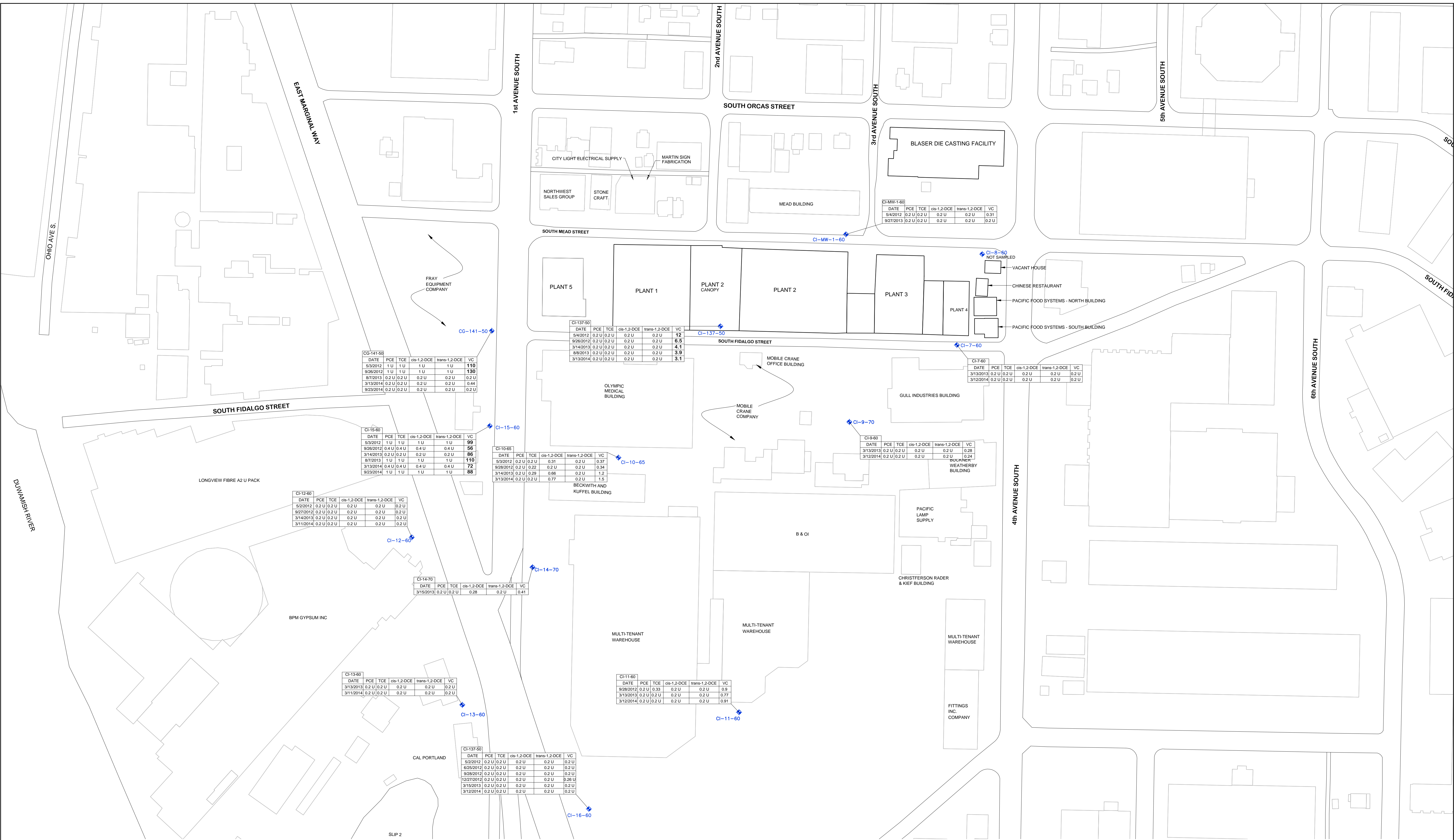
LEGEND
 ◆ CAPITAL INDUSTRIES MONITORING WELL
 ALL ANALYTICAL RESULTS IN MICROGRAMS PER LITER, SAMPLE DATES LISTED
 DCE = DICHLOROETHENE
 PCE = TETRACHLOROETHENE
 TCE = TRICHLOROETHENE
 VC = VINYL CHLORIDE
BOLD - INDICATES CONCENTRATIONS EXCEED WEST OF FOURTH GROUNDWATER INVESTIGATION SCREENING LEVELS FOR GROUNDWATER
 U - INDICATES CONCENTRATIONS NOT DETECTED ABOVE THE STATED LABORATORY PRACTICAL QUANTITATION LIMIT



DRAFT



FIGURE 2
 GROUNDWATER ANALYTICAL RESULTS FOR SHALLOW ZONE: 2012-2014
 REMEDIAL INVESTIGATION CAPITAL INDUSTRIES, INC. SEATTLE, WASHINGTON
 FARALLON PN: 457-007
 Drawn By: DEW Checked By: JK Date: 12/22/2014 Disk Reference: 457-007c



CG-141-60

DATE	PCE	TCE	cis-1,2-DCE	trans-1,2-DCE	VC
5/3/2012	1 U	1 U	1 U	1 U	110
9/26/2012	1 U	1 U	1 U	1 U	130
8/7/2013	0.2 U	0.2 U	0.2 U	0.2 U	0.2 U
3/13/2014	0.2 U	0.2 U	0.2 U	0.2 U	0.44
9/23/2014	0.2 U	0.2 U	0.2 U	0.2 U	0.2 U

CI-15-60

DATE	PCE	TCE	cis-1,2-DCE	trans-1,2-DCE	VC
5/3/2012	1 U	1 U	1 U	1 U	99
9/26/2012	0.4 U	0.4 U	0.4 U	0.4 U	56
3/14/2013	0.2 U	0.2 U	0.2 U	0.2 U	66
8/7/2013	1 U	1 U	1 U	1 U	110
3/13/2014	0.4 U	0.4 U	0.4 U	0.4 U	72
9/23/2014	1 U	1 U	1 U	1 U	88

CI-12-60

DATE	PCE	TCE	cis-1,2-DCE	trans-1,2-DCE	VC
5/2/2012	0.2 U	0.2 U	0.2 U	0.2 U	0.2 U
9/27/2012	0.2 U	0.2 U	0.2 U	0.2 U	0.2 U
3/14/2013	0.2 U	0.2 U	0.2 U	0.2 U	0.2 U
3/11/2014	0.2 U	0.2 U	0.2 U	0.2 U	0.2 U

CI-14-70

DATE	PCE	TCE	cis-1,2-DCE	trans-1,2-DCE	VC
3/15/2013	0.2 U	0.2 U	0.28	0.2 U	0.41

CI-13-60

DATE	PCE	TCE	cis-1,2-DCE	trans-1,2-DCE	VC
3/13/2013	0.2 U	0.2 U	0.2 U	0.2 U	0.2 U
3/11/2014	0.2 U	0.2 U	0.2 U	0.2 U	0.2 U

CI-137-60

DATE	PCE	TCE	cis-1,2-DCE	trans-1,2-DCE	VC
5/2/2012	0.2 U	0.2 U	0.2 U	0.2 U	0.2 U
8/25/2012	0.2 U	0.2 U	0.2 U	0.2 U	0.2 U
9/26/2012	0.2 U	0.2 U	0.2 U	0.2 U	0.2 U
12/27/2012	0.2 U	0.2 U	0.2 U	0.2 U	0.26 U
3/15/2013	0.2 U	0.2 U	0.2 U	0.2 U	0.2 U
3/12/2014	0.2 U	0.2 U	0.2 U	0.2 U	0.2 U

CI-137-60

DATE	PCE	TCE	cis-1,2-DCE	trans-1,2-DCE	VC
5/4/2012	0.2 U	0.2 U	0.2 U	0.2 U	12
9/26/2012	0.2 U	0.2 U	0.2 U	0.2 U	6.5
3/14/2013	0.2 U	0.2 U	0.2 U	0.2 U	4.1
8/6/2013	0.2 U	0.2 U	0.2 U	0.2 U	3.9
3/13/2014	0.2 U	0.2 U	0.2 U	0.2 U	3.1

CI-10-65

DATE	PCE	TCE	cis-1,2-DCE	trans-1,2-DCE	VC
5/3/2012	0.2 U	0.2 U	0.31	0.2 U	0.37
9/26/2012	0.2 U	0.22	0.2 U	0.2 U	0.34
3/14/2013	0.2 U	0.29	0.66	0.2 U	1.2
3/13/2014	0.2 U	0.2 U	0.77	0.2 U	1.5

CI-9-60

DATE	PCE	TCE	cis-1,2-DCE	trans-1,2-DCE	VC
3/13/2013	0.2 U	0.2 U	0.2 U	0.2 U	0.28
3/12/2014	0.2 U	0.2 U	0.2 U	0.2 U	0.24

CI-7-60

DATE	PCE	TCE	cis-1,2-DCE	trans-1,2-DCE	VC
3/13/2013	0.2 U	0.2 U	0.2 U	0.2 U	0.2 U
3/12/2014	0.2 U	0.2 U	0.2 U	0.2 U	0.2 U

LEGEND

◆ CAPITAL INDUSTRIES MONITORING WELL

ALL ANALYTICAL RESULTS IN MICROGRAMS PER LITER, SAMPLE DATES LISTED

DCE = DICHLOROETHENE
 PCE = TETRACHLOROETHENE
 TCE = TRICHLOROETHENE
 VC = VINYL CHLORIDE

BOLD = INDICATES CONCENTRATIONS EXCEED WEST OF FOURTH GROUNDWATER INVESTIGATION SCREENING LEVELS FOR GROUNDWATER

U = INDICATES CONCENTRATIONS NOT DETECTED ABOVE



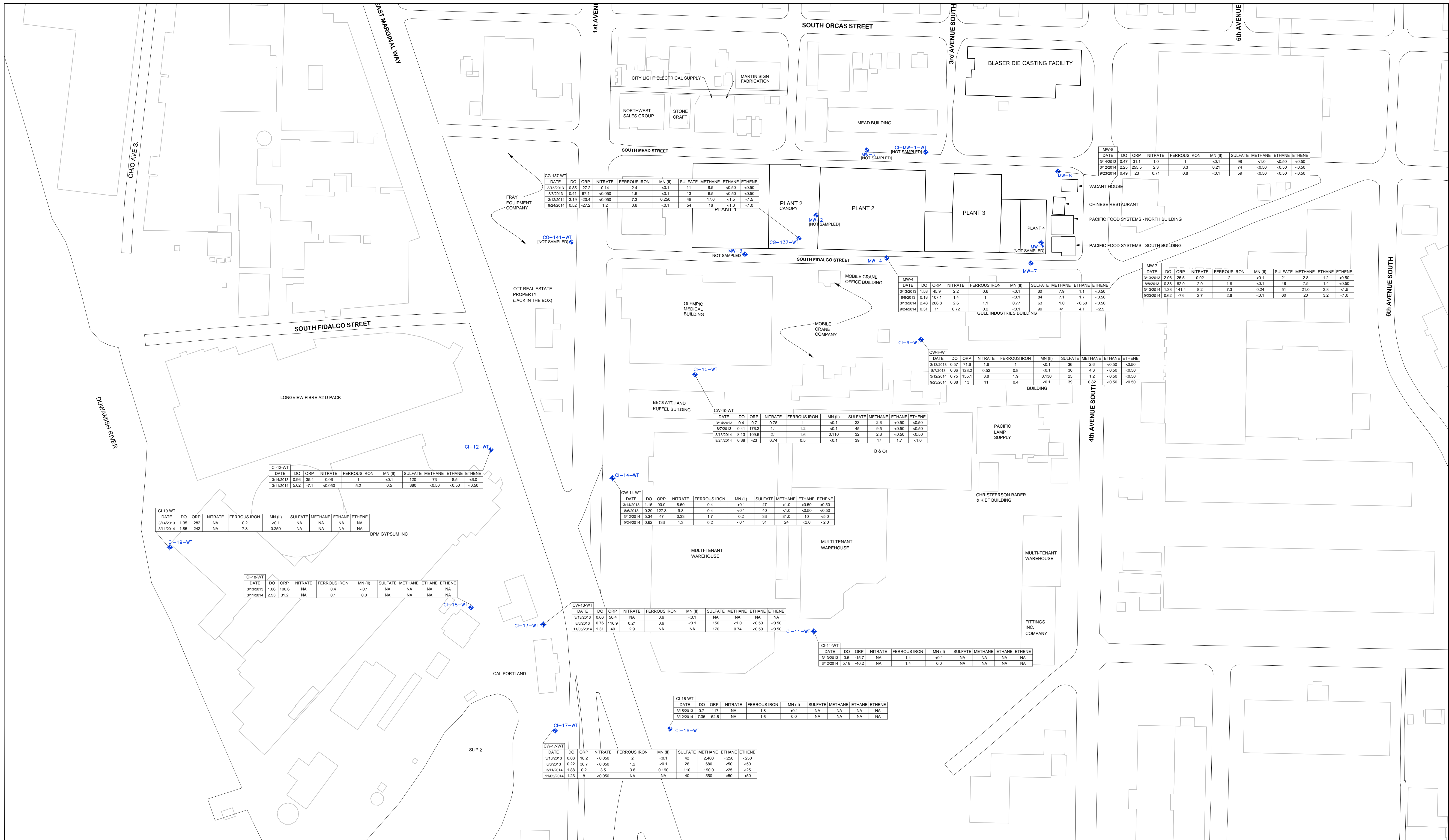
DRAFT



FIGURE 3

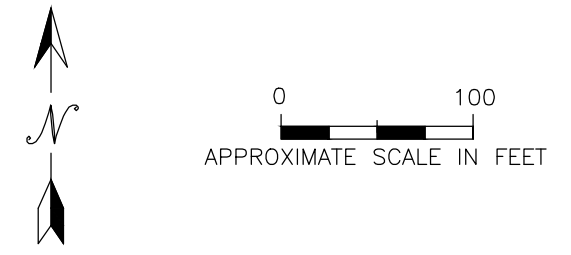
GROUNDWATER ANALYTICAL RESULTS FOR INTERMEDIATE ZONE: 2012-2014
 REMEDIAL INVESTIGATION
 CAPITAL INDUSTRIES, INC.
 SEATTLE, WASHINGTON
 FARALLON PN: 457-007

Drawn By: DEW Checked By: JK Date: 12/22/2014 Disk Reference: 457-007c



LEGEND

- ◆ CAPITAL INDUSTRIES MONITORING WELL
- DO = DISSOLVED OXYGEN (MILLIGRAMS PER LITER) (mg/L)
- ORP = OXIDATION REDUCTION POTENTIAL (MILLIVOLTS)
- MN (II) = MANGANESE II
- NA = NOT ANALYZED
- FERROUS IRON, MAGANESE II, NITRATE AND SULFATE IN mg/L UNITS
- METHANE, ETHANE, AND ETHENE IN MICROGRAMS PER LITER UNITS



DRAFT

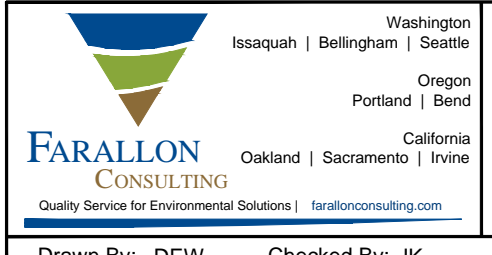
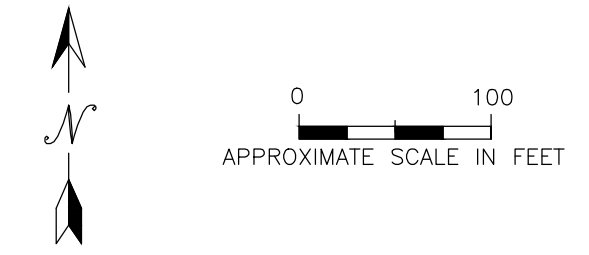


FIGURE 1A
 NATURAL ATTENUATION PARAMETERS RESULTS FOR
 WATER TABLE ZONE: 2012-2014
 REMEDIAL INVESTIGATION
 CAPITAL INDUSTRIES, INC.
 SEATTLE, WASHINGTON
 FARALLON PN: 457-007



LEGEND

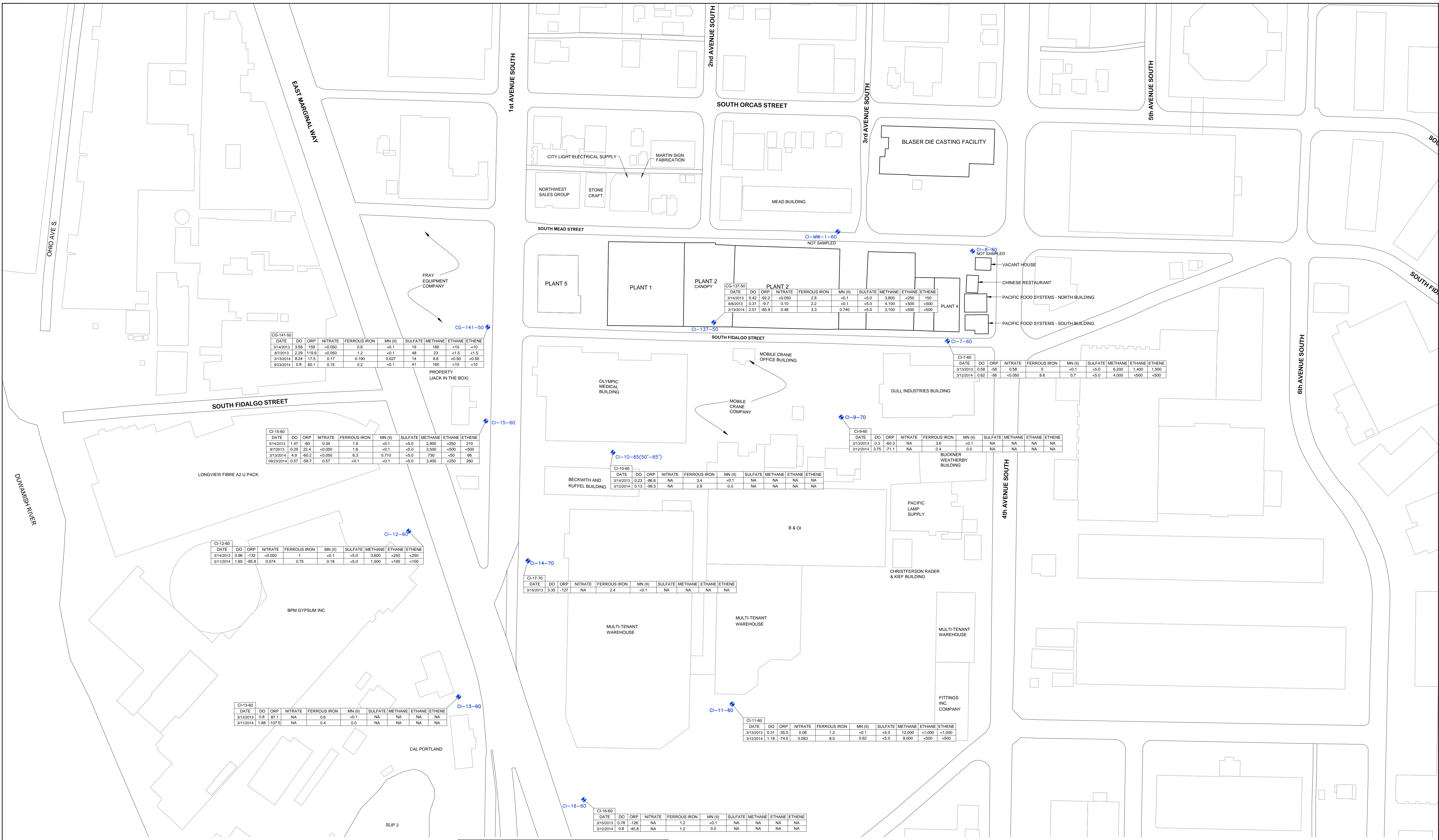
- ◆ CAPITAL INDUSTRIES MONITORING WELL
- DO = DISSOLVED OXYGEN (MILLIGRAMS PER LITER) (mg/L)
- ORP = OXIDATION REDUCTION POTENTIAL (MILLIVOLTS)
- MN (II) = MAGANESE II
- NA = NOT ANALYZED
- FERROUS IRON, MAGANESE II, NITRATE AND SULFATE IN mg/L UNITS
- METHANE, ETHANE, AND ETHENE IN MICROGRAMS PER LITER UNITS



DRAFT

FARALLON CONSULTING
 Quality Service for Environmental Solutions | farallonconsulting.com
 Washington | Issaquah | Bellingham | Seattle
 Oregon | Portland | Bend
 California | Oakland | Sacramento | Irvine

FIGURE 2A
 NATURAL ATTENUATION PARAMETERS RESULTS FOR
 SHALLOW ZONE: 2012-2014
 REMEDIAL INVESTIGATION
 CAPITAL INDUSTRIES, INC.
 SEATTLE, WASHINGTON
 FARALLON PN: 457-007
 Drawn By: DEW Checked By: JK Date: 12/22/2014 Disk Reference: 457-007c



CG-141-60

DATE	DO	ORP	NITRATE	FERROUS IRON	MN (II)	SULFATE	METHANE	ETHANE	ETHENE
3/14/2013	3.58	159	<0.050	0.6	<0.1	19	180	<10	<10
8/7/2013	2.29	119.6	<0.050	1.2	<0.1	48	23	<1.5	<1.5
3/13/2014	8.24	17.5	0.17	0.190	0.027	14	8.6	<0.50	<0.50
9/23/2014	0.8	60.1	0.15	0.2	<0.1	41	150	<10	<10

CI-15-60

DATE	DO	ORP	NITRATE	FERROUS IRON	MN (II)	SULFATE	METHANE	ETHANE	ETHENE
3/14/2013	1.47	-80	0.34	1.6	<0.1	<5.0	2,900	<250	210
8/7/2013	0.29	22.4	<0.050	1.6	<0.1	<5.0	3,500	<500	<500
3/13/2014	4.9	-60.2	<0.050	6.3	0.710	<5.0	730	<50	66
09/23/2014	0.57	-58.7	0.57	<0.1	<0.1	<5.0	3,400	<250	260

CI-12-60

DATE	DO	ORP	NITRATE	FERROUS IRON	MN (II)	SULFATE	METHANE	ETHANE	ETHENE
3/14/2013	0.96	-132	<0.050	1	<0.1	<5.0	3,600	<250	<250
3/11/2014	1.65	-95.8	0.074	0.75	0.18	<5.0	1,500	<100	<100

CI-13-60

DATE	DO	ORP	NITRATE	FERROUS IRON	MN (II)	SULFATE	METHANE	ETHANE	ETHENE
3/13/2013	0.8	87.1	NA	0.6	<0.1	NA	NA	NA	NA
3/11/2014	1.88	-107.5	NA	0.4	0.0	NA	NA	NA	NA

CG-137-50

DATE	DO	ORP	NITRATE	FERROUS IRON	MN (II)	SULFATE	METHANE	ETHANE	ETHENE
3/14/2013	0.42	-82.2	<0.050	2.8	<0.1	<5.0	3,800	<250	150
8/8/2013	0.31	-9.7	0.10	2.2	<0.1	<5.0	4,100	<500	<500
3/13/2014	2.51	-85.9	0.48	3.3	0.740	<5.0	3,100	<500	<500

CI-7-60

DATE	DO	ORP	NITRATE	FERROUS IRON	MN (II)	SULFATE	METHANE	ETHANE	ETHENE
3/13/2013	0.58	-58	0.58	5	<0.1	<5.0	6,200	1,400	1,500
3/12/2014	0.62	-56	<0.050	8.6	0.7	<5.0	4,000	<500	<500

CI-9-60

DATE	DO	ORP	NITRATE	FERROUS IRON	MN (II)	SULFATE	METHANE	ETHANE	ETHENE
3/13/2013	0.3	-60.3	NA	3.6	<0.1	NA	NA	NA	NA
3/12/2014	3.75	-71.1	NA	0.4	0.0	NA	NA	NA	NA

CI-10-65(50'-65')

DATE	DO	ORP	NITRATE	FERROUS IRON	MN (II)	SULFATE	METHANE	ETHANE	ETHENE
3/14/2013	0.23	-86.6	NA	3.4	<0.1	NA	NA	NA	NA
3/12/2014	0.13	-99.5	NA	2.8	0.0	NA	NA	NA	NA

CI-17-70

DATE	DO	ORP	NITRATE	FERROUS IRON	MN (II)	SULFATE	METHANE	ETHANE	ETHENE
3/15/2013	3.35	-127	NA	2.4	<0.1	NA	NA	NA	NA

CI-11-60

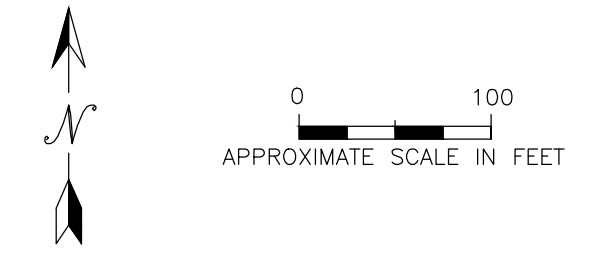
DATE	DO	ORP	NITRATE	FERROUS IRON	MN (II)	SULFATE	METHANE	ETHANE	ETHENE
3/13/2013	0.31	-35.5	0.08	1.2	<0.1	<5.0	12,000	<1,000	<1,000
3/12/2014	1.18	-74.5	0.083	8.0	0.62	<5.0	8,000	<500	<500

CI-16-60

DATE	DO	ORP	NITRATE	FERROUS IRON	MN (II)	SULFATE	METHANE	ETHANE	ETHENE
3/15/2013	0.78	-126	NA	1.2	<0.1	NA	NA	NA	NA
3/12/2014	0.8	-45.8	NA	1.2	0.0	NA	NA	NA	NA

LEGEND

- ◆ CAPITAL INDUSTRIES MONITORING WELL
- DO = DISSOLVED OXYGEN (MILLIGRAMS PER LITER) (mg/L)
- ORP = OXIDATION REDUCTION POTENTIAL (MILLIVOLTS)
- MN (II) = MAGANESE II
- NA = NOT ANALYZED
- FERROUS IRON, MAGANESE II, NITRATE AND SULFATE IN mg/L UNITS
- METHANE, ETHANE, AND ETHENE IN MICROGRAMS PER LITER UNITS



DRAFT

Washington
Issaquah | Bellingham | Seattle

Oregon
Portland | Bend

California
Oakland | Sacramento | Irvine

FARALLON CONSULTING
Quality Service for Environmental Solutions | farallonconsulting.com

Drawn By: DEW Checked By: JK Date: 12/22/2014 Disk Reference: 457-007c

FIGURE 3A
NATURAL ATTENUATION PARAMETERS RESULTS FOR
INTERMEDIATE ZONE: 2012-2014
REMEDIAL INVESTIGATION
CAPITAL INDUSTRIES, INC.
SEATTLE, WASHINGTON
FARALLON PN: 457-007